



Overhead 3D People Counter Solution (Cloud) - Technical Diagram

People Counter Sensor



Data Transfer to Switch
via Power Over Ethernet (PoE)

Data Transfer to EvolvePlus
Cloud Dashboard

PoE Switch
(Provides Data & Power to Sensor)



EvolvePlus Cloud
Dashboard

Overhead 3D People Counter Sensor

Technology	3D Stereo Vision with Artificial Intelligence
Mounting:	Ceiling
	Optional IP65 Outdoor Casing
Requirements:	PoE (Power over Ethernet)
Dimensions:	130 x 94 x 30 mm (approx)
Weight:	0.35 Kg
Material:	White
Power:	max. 7W
	Power over Ethernet Class 0 (IEEE 802.3af)
Connection:	100m cat5e
Required Illumination:	min. 2 lux
Operating Temperature:	0 – 45°C
Width of Field of View:	7 x 5m (at 5 metre ceiling for model PC2S) 2.26 x 1.46m (at 2.5 metre ceiling for PC2S)
Mounting Height Range:	2.2m - 6m (model PC2S)

PoE Switch (for Data & Power to Sensor)

e.g. TP-Link SG1005P 5 Port PoE switch	
** Not Included **	
Requirements:	AC Power
PoE Power:	Up to 56W for all PoE ports
PoE Compliance:	802.3 af
Dimensions:	99.8 x 98 x 25 mm
Consumption:	3.95W(220/50Hz. no PD connected) 64.44W(220/50Hz. with 56W PD connected)

EvolvePlus Cloud Dashboard

Cloud Provider:	EvolvePlus
Data Centre Location:	Sydney, Australia
SNG Data Transfer:	TCP/IP
Supported Browsers:	Chrome 30+, Firefox 30+, IE 11+, Safari 8+
CSV Data Export:	Included
Occupancy Web App:	Optional

This publication is provided for information and illustrative purposes only, and subject to change without notice.



Overhead 3D People Counter Solution (Cloud) - Connecting to Building Wi-Fi

People Counter Sensor



Data Transfer to Switch
via Power Over Ethernet (PoE)

Data Transfer to EvolvePlus
Cloud Dashboard



EvolvePlus Cloud
Dashboard

PoE Injector
(Provides Data & Power to Sensor)
& Wireless Access Point



Overhead 3D People Counter Sensor

Technology	3D Stereo Vision with Artificial Intelligence
Mounting:	Ceiling
	Optional IP65 Outdoor Casing
Requirements:	PoE (Power over Ethernet)
Dimensions:	130 x 94 x 30 mm (approx)
Weight:	0.35 Kg
Material:	White
Power:	max. 7W
	Power over Ethernet Class 0 (IEEE 802.3af)
Connection:	100m cat5e
Required Illumination:	min. 2 lux
Operating Temperature:	0 – 45°C
Width of Field of View:	7 x 5m (at 5 metre ceiling for model PC2S) 2.26 x 1.46m (at 2.5 metre ceiling for PC2S)
Mounting Height Range:	2.2m - 6m (model PC2S)

PoE Injector (for Data & Power to Sensor)

e.g. TP-Link TL-POE150S	
** Not Included **	
Requirements:	AC Power
PoE Power:	Up to 15W for 1 x PoE port
PoE Compliance:	802.3 af
Dimensions:	80.8 x 54 x 24 mm

Wireless Access Point

(e.g. TP-Link TL-WA855RE Wi-Fi Range Extender)	
** Not Included **	
Mounting:	Plug-in Powerpoint Socket
Requirements:	AC Power
Wireless Mode:	Range Extender/Access Point
Wi-Fi Frequency:	2.4 GHz
Dimensions:	80 x 78 x 77 mm
Consumption:	3.6W (approx.)
Management:	Tether App for iOS and Android

EvolvePlus Cloud Dashboard

Cloud Provider:	EvolvePlus
Data Centre Location:	Sydney, Australia
SNG Data Transfer:	TCP/IP
Supported Browsers:	Chrome 30+, Firefox 30+, IE 11+, Safari 8+
CSV Data Export:	Included
Occupancy Web App:	Optional

This publication is provided for information and illustrative purposes only, and subject to change without notice.



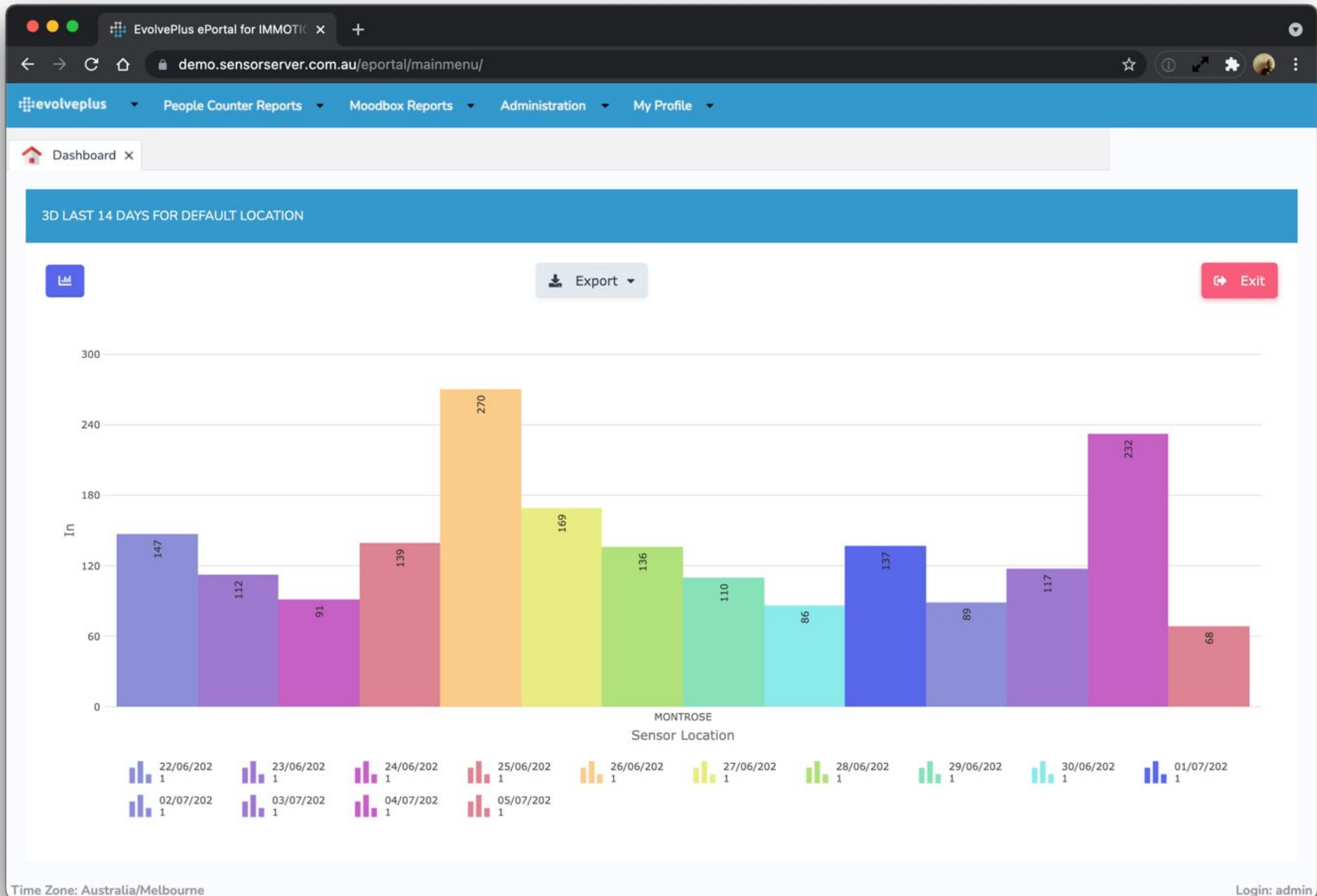
Installation Height	Sensor Model PC2S	Optional Sensor Model PC2S-UL Extended Coverage
2.5m	2.26m x 1.46m	2.50m x 2.16m
3.0m	3.53m x 2.10m	4.88m x 4.04m
3.5m	4.69m x 2.95m	6.75m x 5.70m
4.0m	5.84m x 3.68m	Not Supported
5.0m	7.00m x 5.00m	Not Supported
6.0m	7.00m x 5.00m	Not Supported

Note: the following are the optimal mounting heights for the following optional plugins for Model PC2S:

- Gender Statistics - optimal mounting height 2.4 to 4 m
- Staff Exclusion - optimal mounting height 3 to 3.5 m



Dashboard: Chart for Last 14 Days





Dashboard: Chart for Last 7 Days with Gender Estimates

EvolvePlus ePortal for IMMOTIC

demo.sensorsserver.com.au/eportal/mainmenu/

evolveplus People Counter Reports Moodbox Reports Administration My Profile

Dashboard 3D Counter for Gender Estimates for Default Location

3D LAST 7 DAYS FOR DEFAULT LOCATION

Export

Date	In
29/06/202	110
30/06/202	86
01/07/202	137
02/07/202	89
03/07/202	117
04/07/202	232
05/07/202	68

MONTROSE
Sensor Location

3D GENDER ESTIMATED TODAY

Export

Female

Male

Female Male

Time Zone: Australia/Melbourne

Login: admin

Note: Gender Estimates is an optional plugin



DAILY 3D PEOPLE COUNTER LINE REPORT WITH GENDER ESTIMATE

Sorting Columns Export Back

Location Equal MONTROSE, and Date Between 29/06/2021 and 05/07/2021

Sensor Location	Sensor Position	Line Element	Date	In	Est. Female	Est. Male
MONTROSE	ENTRANCE	West Corridor	05/07/2021	43	41 %	48 %
MONTROSE	ENTRANCE	East Corridor	05/07/2021	25	46 %	46 %
MONTROSE	ENTRANCE	West Corridor	04/07/2021	190	62 %	34 %
MONTROSE	ENTRANCE	East Corridor	04/07/2021	42	63 %	35 %
MONTROSE	ENTRANCE	West Corridor	03/07/2021	86	43 %	43 %
MONTROSE	ENTRANCE	East Corridor	03/07/2021	31	55 %	29 %
MONTROSE	ENTRANCE	West Corridor	02/07/2021	66	44 %	52 %
MONTROSE	ENTRANCE	East Corridor	02/07/2021	23	35 %	48 %
MONTROSE	ENTRANCE	West Corridor	01/07/2021	90	51 %	47 %
MONTROSE	ENTRANCE	East Corridor	01/07/2021	47	70 %	30 %
MONTROSE	ENTRANCE	West Corridor	30/06/2021	65	52 %	38 %

Time Zone: Australia/Melbourne Login: admin

Note: Gender Estimates is an optional plugin



EvolvePlus ePortal for IMMOTIC

demo.sensorserver.com.au/eportal/mainmenu/

evolveplus People Counter Reports Moodbox Reports Administration My Profile

Dashboard x Hourly 3D Counter Line by Location x

HOURLY 3D PEOPLE COUNTER LINE REPORT (IN)

Sorting Columns Export Back

Location Equal MONTROSE, and Position Contains ENTRANCE, and Line Element Equal East Corridor, and Date Between 29/06/2021 and 05/07/2021

Sensor Location	Sensor Position	Line Element	Date	12 AM	1 AM	2 AM	3 AM	4 AM	5 AM	6 AM	7 AM	8 AM	9 AM	10 AM	11 AM	12 PM	1 PM	2 PM	3 PM	4 PM	5 PM	6 PM	7 PM	8 PM	9 PM	10 PM	11 PM	Total	
MONTROSE	ENTRANCE	East Corridor	05/07/2021	0	0	0	0	0	0	0	0	3	5	9	3	2	0	3	0	0	0	0	0	0	0	0	0	25	
MONTROSE	ENTRANCE	East Corridor	04/07/2021	0	0	0	0	0	0	0	0	3	3	0	0	0	3	11	4	1	2	2	5	8	0	0	0	42	
MONTROSE	ENTRANCE	East Corridor	03/07/2021	0	0	0	0	0	0	0	1	2	6	1	3	3	3	1	0	6	1	2	0	0	1	0	1	31	
MONTROSE	ENTRANCE	East Corridor	02/07/2021	0	0	0	0	0	0	0	0	4	2	2	3	2	3	0	0	0	1	0	0	0	2	4	0	23	
MONTROSE	ENTRANCE	East Corridor	01/07/2021	0	0	0	0	0	0	0	2	2	13	11	10	5	2	0	0	0	0	2	0	0	0	0	0	47	
MONTROSE	ENTRANCE	East Corridor	30/06/2021	0	0	0	0	0	0	0	0	1	1	5	4	0	1	2	0	1	1	4	0	1	0	0	0	21	
MONTROSE	ENTRANCE	East Corridor	29/06/2021	0	0	0	0	0	0	0	0	5	2	3	2	0	1	0	3	2	0	6	0	0	0	0	0	24	
Grand Summary				0	0	0	0	0	0	0	0	3	20	32	31	25	12	13	17	7	10	5	16	5	9	3	4	1	213

Go to 1 View 25

1 [1 to 7 of 7]

Time Zone: Australia/Melbourne Login: admin



EvolvePlus ePortal for IMMOTIC

demo.sensorserver.com.au/eportal/mainmenu/

evolveplus People Counter Reports Moodbox Reports Administration My Profile

Dashboard Weekday 3D Counter Line by Location

WEEKDAY 3D PEOPLE COUNTER LINE REPORT (IN)

Sorting Columns Export Back

Location Equal MONTROSE, and Position Contains ENTRANCE, and Line Element Equal West Corridor, and Date Between 04/06/2021 and 04/07/2021

Sensor Location	Sensor Position	Line Element	Week No	Year	Month	Sunday	Monday	Tuesday	Wednesday	Thursday	Friday	Saturday	Total
MONTROSE	ENTRANCE	West Corridor	27	2021	July	190	0	0	0	0	0	0	190
MONTROSE	ENTRANCE	West Corridor	26	2021	June	110	87	86	65	90	66	86	590
MONTROSE	ENTRANCE	West Corridor	25	2021	June	138	68	112	69	60	91	181	719
MONTROSE	ENTRANCE	West Corridor	24	2021	June	108	41	57	64	49	203	198	720
MONTROSE	ENTRANCE	West Corridor	23	2021	June	81	70	103	91	0	46	182	573
MONTROSE	ENTRANCE	West Corridor	22	2021	June	0	0	0	0	0	99	101	200
Grand Summary						627	266	358	289	199	505	748	2,992

Time Zone: Australia/Melbourne Login: admin